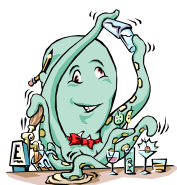


February 2010 Activity Calendar

Palmetto Elks Lodge #2449

4611 4th Ave. E. • P.O. Box 272 • Palmetto, FL 34220-0272

Telephone (941) 722-6937



Sun	Mon	Tue	Wed	Thu	Fri	Sat
	1 Lounge Open 1:00 PM - ??? Food 5:00-7 PM Full Menu Karaoke Dee	2 Lounge Open 1:00-8:00 PM Bar Com. Mtg 6:00 PM Officers Mtg. 7:00 PM	3 Lounge Open 1:00-8:00	4 Lounge Open 1:00-8:00 Potluck 5:00 Music donated by L&L	5 Lounge Open 1:00 - ??? 4:30 - 7:00 PM Fish Fry w/ Stew Music 6-9 PM 50/50 Drawing Squirrel	6 Lounge Open 1:00-8:00 PM
7 Breakfast Buffet 9:00 - 12:00 \$7.00	8 Lounge Open 1:00 PM - ??? Food 5:00-7 PM Full Menu Karaoke CJ	9 Lounge Open 1:00-7:30 LODGE MEETING 7:30	10 Lounge Open 1:00 - ??? Italian Night 5:00 - 7:00PM All-you-can-eat Spaghetti \$6.00 Bobby Remp	11 Lounge Open 1:00 - 8:00 PM	12 Lounge Open 1:00 - ??? 4:30 - 7:00 PM Fish Fry w/ Am. Chop Suey Music 6-9 PM 50/50 Drawing Tony Boeing	13 Lounge Open 1:00-8:00 PM Valentines DD music Dee
14 Boom Ba 12:00 - 4:00 Musical Memories	15 Lounge Open 1:00 PM - ??? Food 5:00-7 PM Full Menu w/ Philly Steak Karaoke Bob Dunn	16 Lounge Open 1:00-8:00 Trustee Mtg 6:00 PER Mtg. 7:00	17 Lounge Open 1:00-8:00	18 Lounge Open 1:00 - 8:00 PM German Meal 5:00 - 7:00 music Black Tie Affair	19 Lounge Open 1:00 - ??? Fish Fry w/ Meatloaf 4:30 - 7:00 PM Music 6-9 PM 50/50 Drawing Chuck Cobb	20 Lounge Open 1:00-8:00 PM
21 Breakfast Buffet 9:00 - 12:00 \$7.00	22 Lounge Open 1:00 PM - ??? Food 5:00-7 PM Full Menu Karaoke Lenny	23 Lounge Open 1:00 - 7:30PM LODGE MEETING Initiation 7:30	24 Lounge Open 1:00 - ??? Italian Night 5:00 - 7:00PM All-you-can-eat Spaghetti \$6.00 Music Bobby Remp	25 Lounge Open 1:00 - 6:00 PM	26 Lounge Open 1:00 - ??? 4:30 - 7:00 PM Fish Fry w/ Stuffed Cabbage Music 6-9 PM 50/50 Drawing Dave Harris	27 Lounge Open 1:00-8:00 PM
28 CLOSED	Valentines Day Dinner Dance Saturday February 13, 2010 Music by DEE All you Lovers get your tickets and celebrate Tickets \$8.00					